

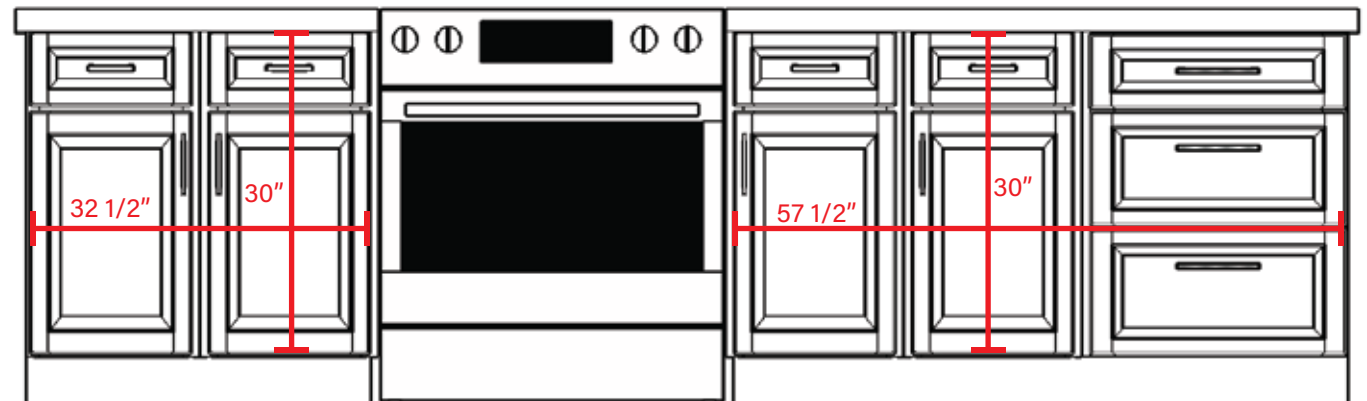
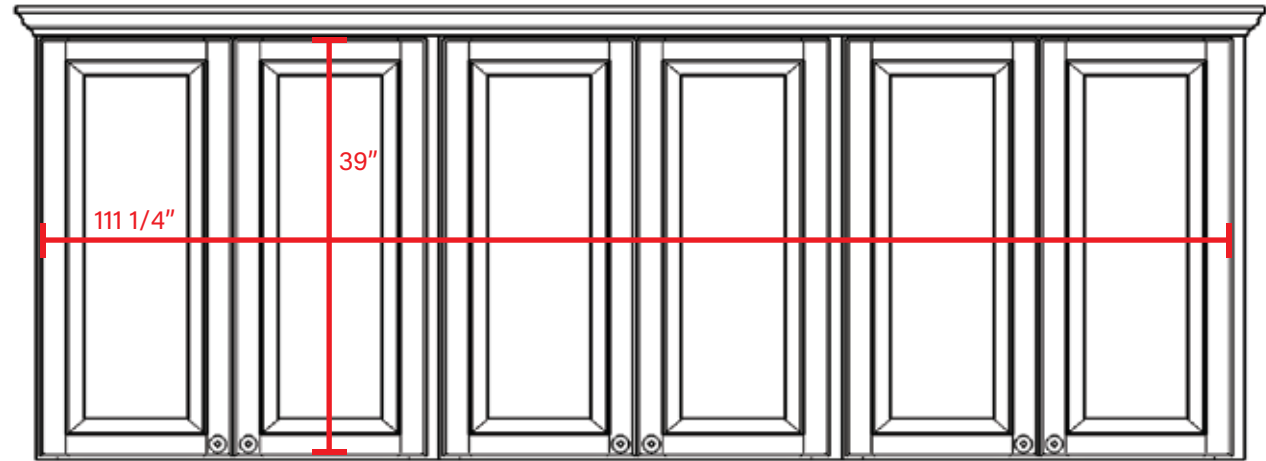
# How To Quickly Measure Your Cabinets

*Easily measure your cabinets to provide Better Than New Kitchens with approximate facial square footage of doors, drawer faces, and side panels for your initial cabinet refacing quote.*

## Door & Drawer Measurements

Measure the areas of the cabinets you'd like refaced by taking group measurements of uninterrupted cabinets and drawers, as shown in the diagram on the right.

- Include the spacing in between doors and drawers, if any
- Do not measure appliances (unless they have wood paneling)
- Do not measure crown molding and kickplates



Doors & Drawers:  
111 1/4" x 39"  
32 1/2" x 30"  
57 1/2" x 30"

## Side Panel Measurements

Take similar measurements of the side panels, as shown in the diagram.

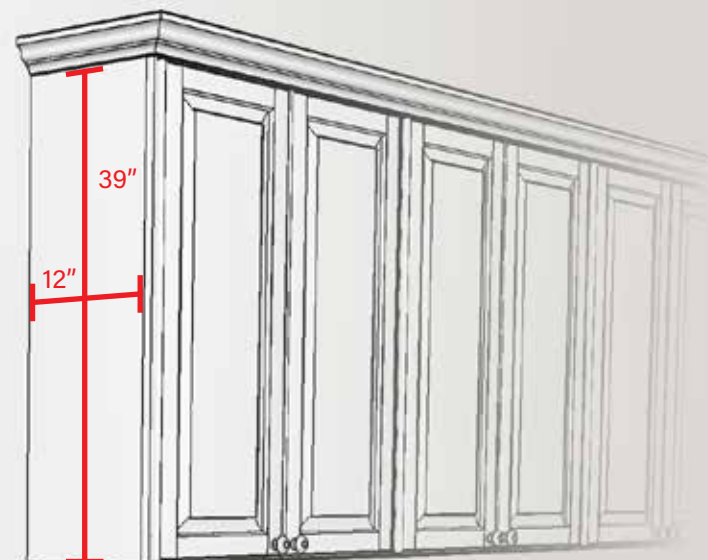
- Include the spacing in between doors and drawers, if any
- Do not measure appliances (unless they have wood paneling)
- Do not measure crown molding and kickplates

## What To Do Next

Either through the website Quote Request Form or email, send the following information to Better Than New Kitchens:

- Your list of the cabinet dimensions just measured
- 3-4 pictures of your existing kitchen
- A description of what you want done
- Your name, phone number and address (or nearest cross-streets)

Expect a prompt response! You'll receive a call back and an emailed quote within 2 business days. If you do not receive a response within that timeframe, please call us at (480) 429-7615.



Side Panels:  
39" x 12"  
34 1/2" x 24"

