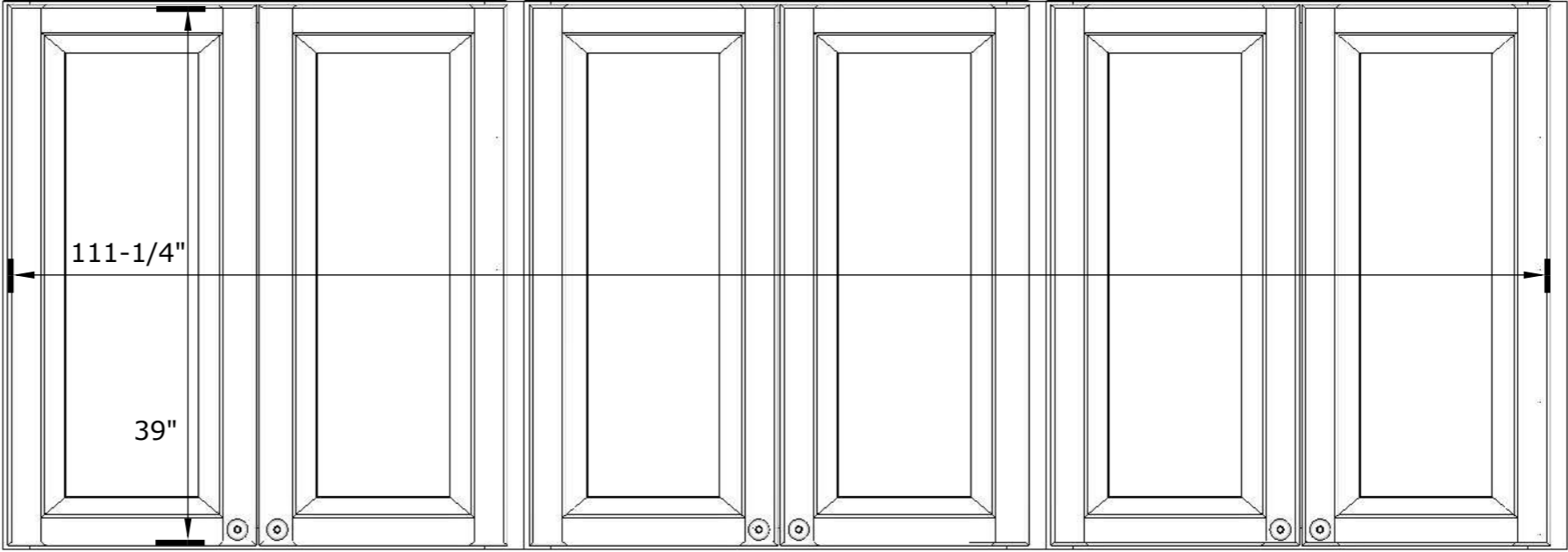


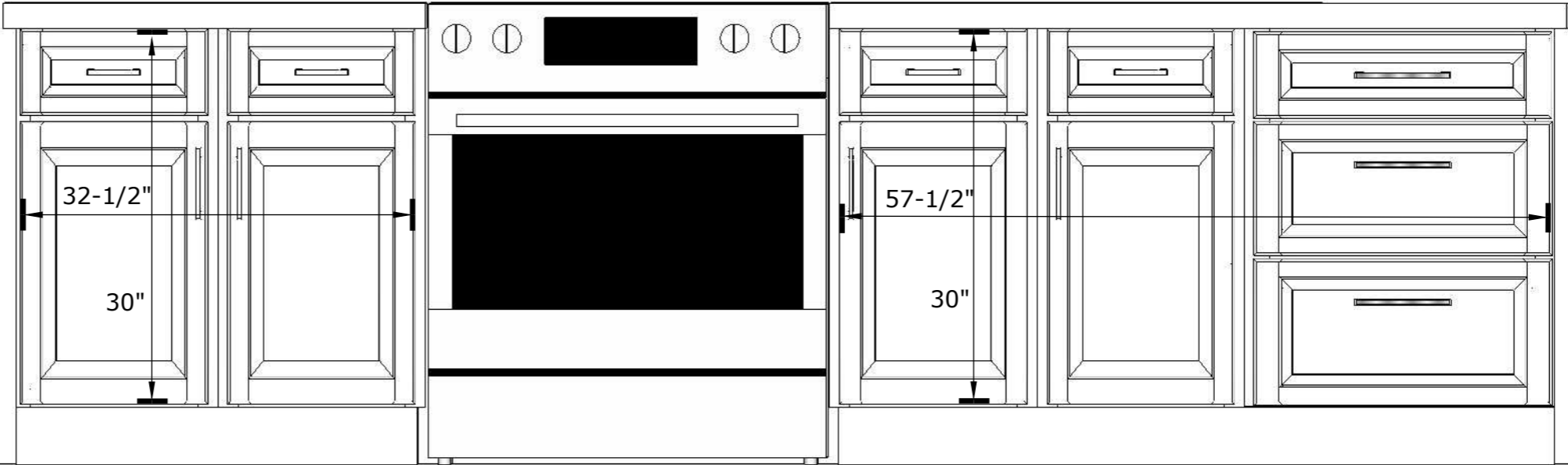
DOORS & DRAWER FACE MEASURE

Measure your cabinets as shown below in the diagram, wherever there are doors and drawer faces. Leave the face frame spaces between the doors and drawers in the measurement. Exclude all appliances. Include a list of all the measurements, like the example shown below, in an email that you send to us at dan.betterthanneew@gmail.com. Be sure to include all the areas that you would like to have refaced. This measure will give us the approximate facial square footage of doors and drawer faces in your kitchen.



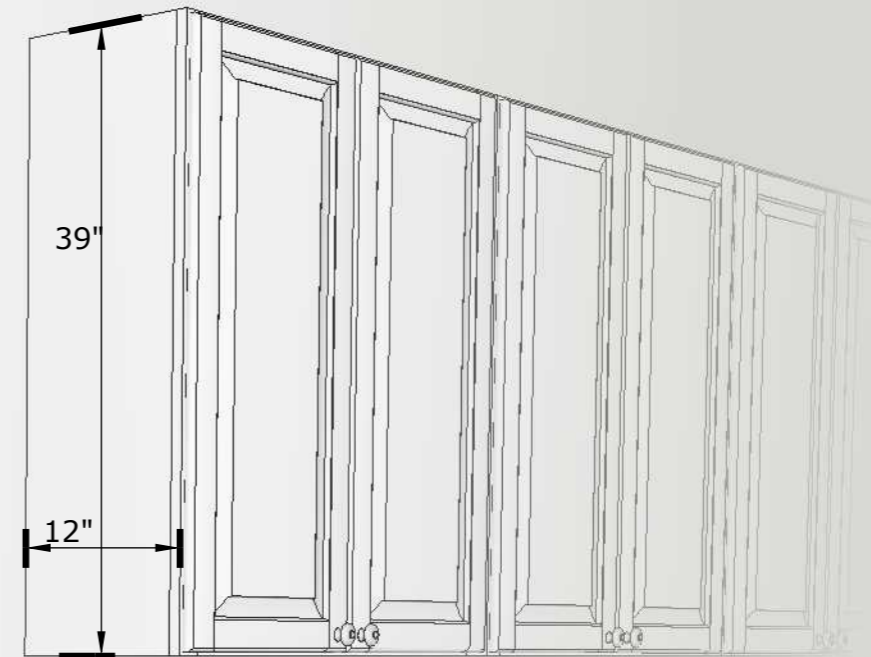
Doors & Drawers

- 111 1/4" x 39"
- 32 1/2" x 30"
- 57 1/2" x 30"



SIDE PANELS MEASURE

Do the same measure procedure for the side panels of wood on your cabinets that are not doors and drawer faces, list these side panel measurements separately from the doors and drawer face measurements you did earlier. This measure will give us the approximate facial square footage of the side panels in your kitchen.



Side Panels

39" x 12"
34 1/2" x 24"

